

WSQA Performance Excellence Symposium

May 3, 2005

The Pathway to Compliance

Dennis L. Carlson, Ed.D.

Superintendent

Lynden School District # 504



Lynden School District At a Glance

- 2,700 students, 30+% low socioeconomic status, 23% minority;
- 329 employees;
- 75 square mile service area;
- 8 school sites – 3 “Alternative Model Schools; and
- Required by law to serve all qualifying, resident students between the ages of 3 and 21 years



Competitive Environment

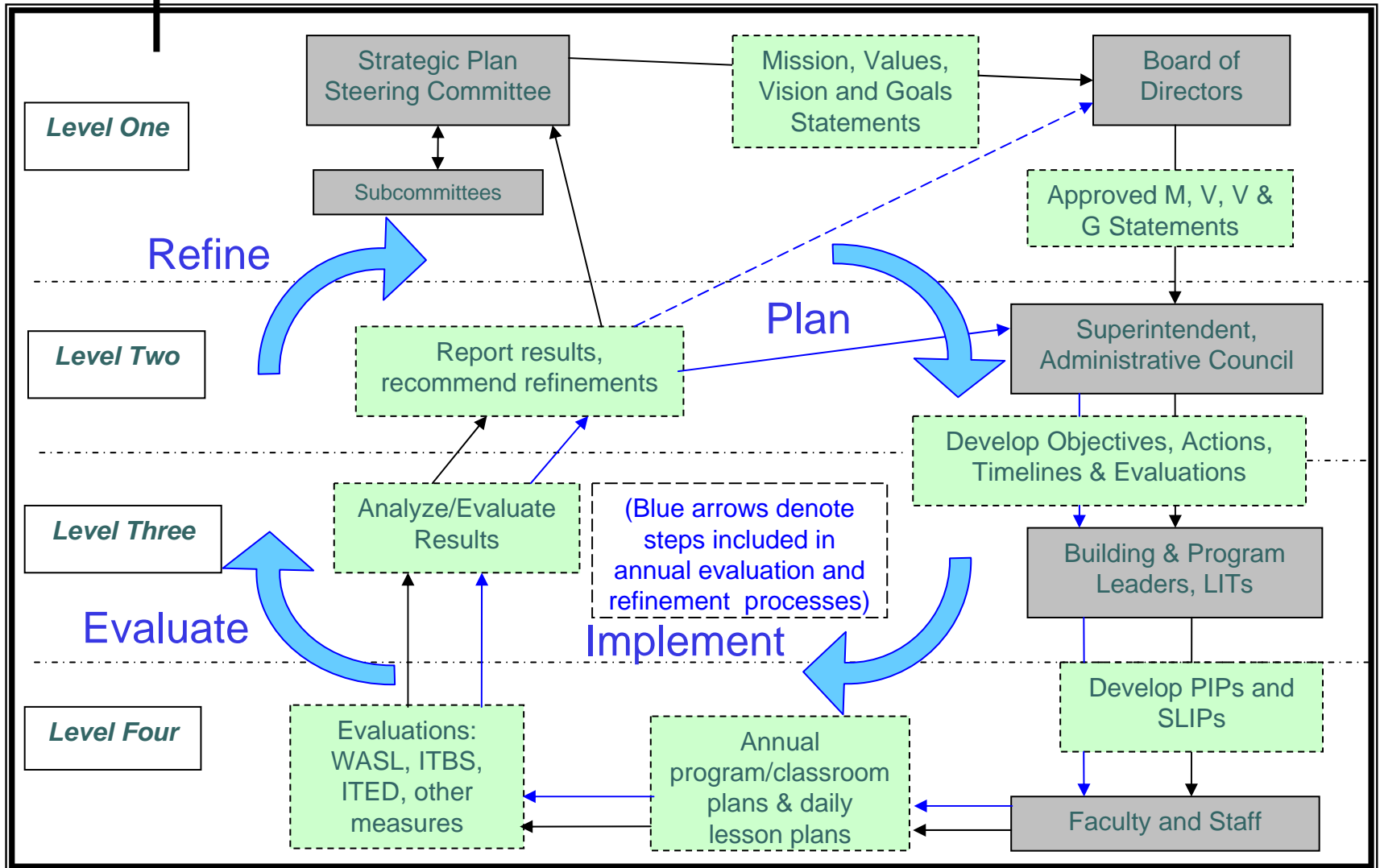
- 1/3 of school aged students attend church-supported private schools;
- Large population of home schooling parents in county;
- “Choice” option available to parents allowing student attendance in neighboring districts;
- Running Start; and
- Increase in availability of on-line courses.



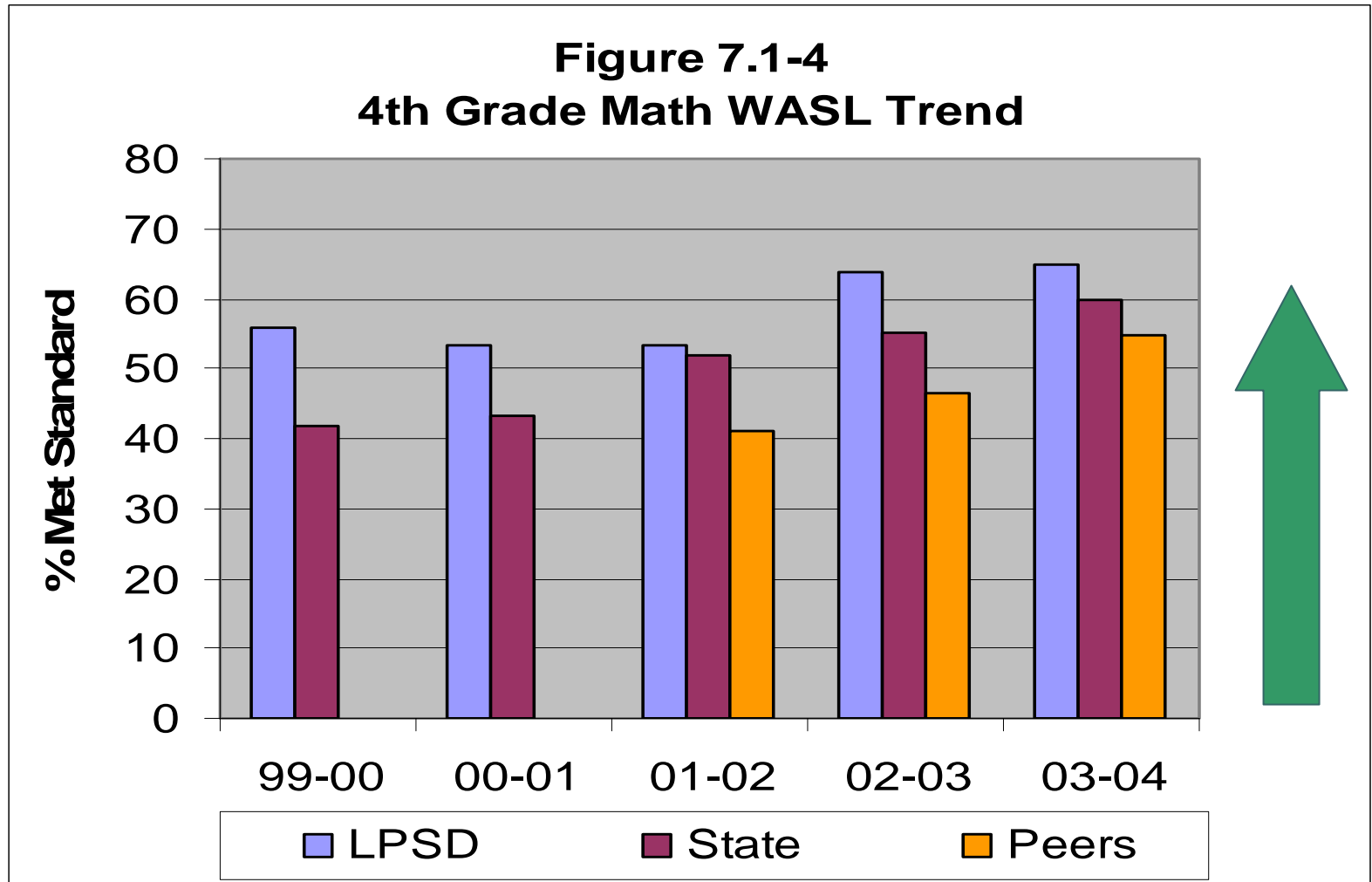
Regulatory Environment

- Federal regulations drive programs: Title 1, IDEA, Title IX, federal courts, Dept. of Educ. (NCLB), Dept. of Ag. (School Meals);
- State regulations drive length of school day/school year, staff certification, accounting practices, assessments of performance, policy development; and
- Local regulations through district policy, municipal codes, county ordinances.

The LPSD Strategic Planning Cycle

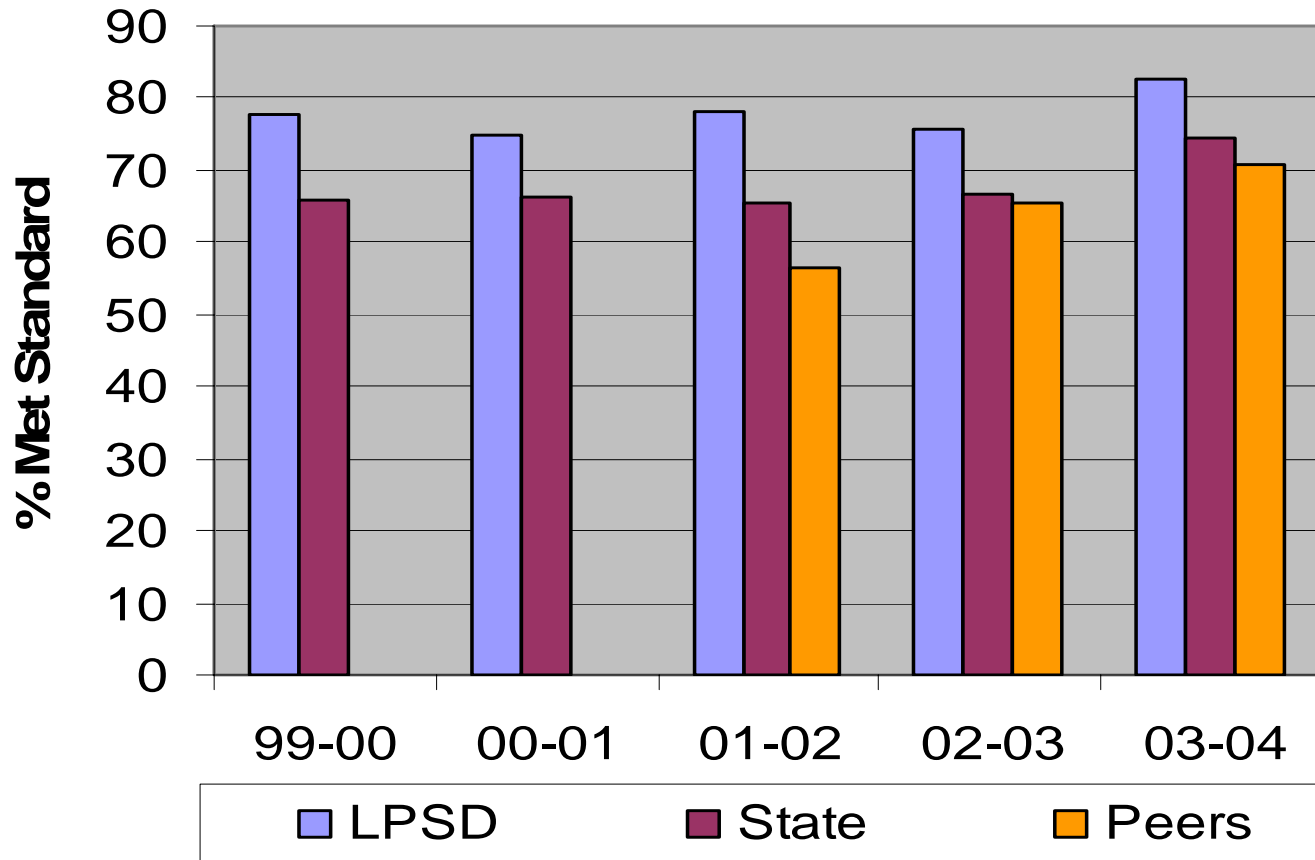


Student Performance Trends



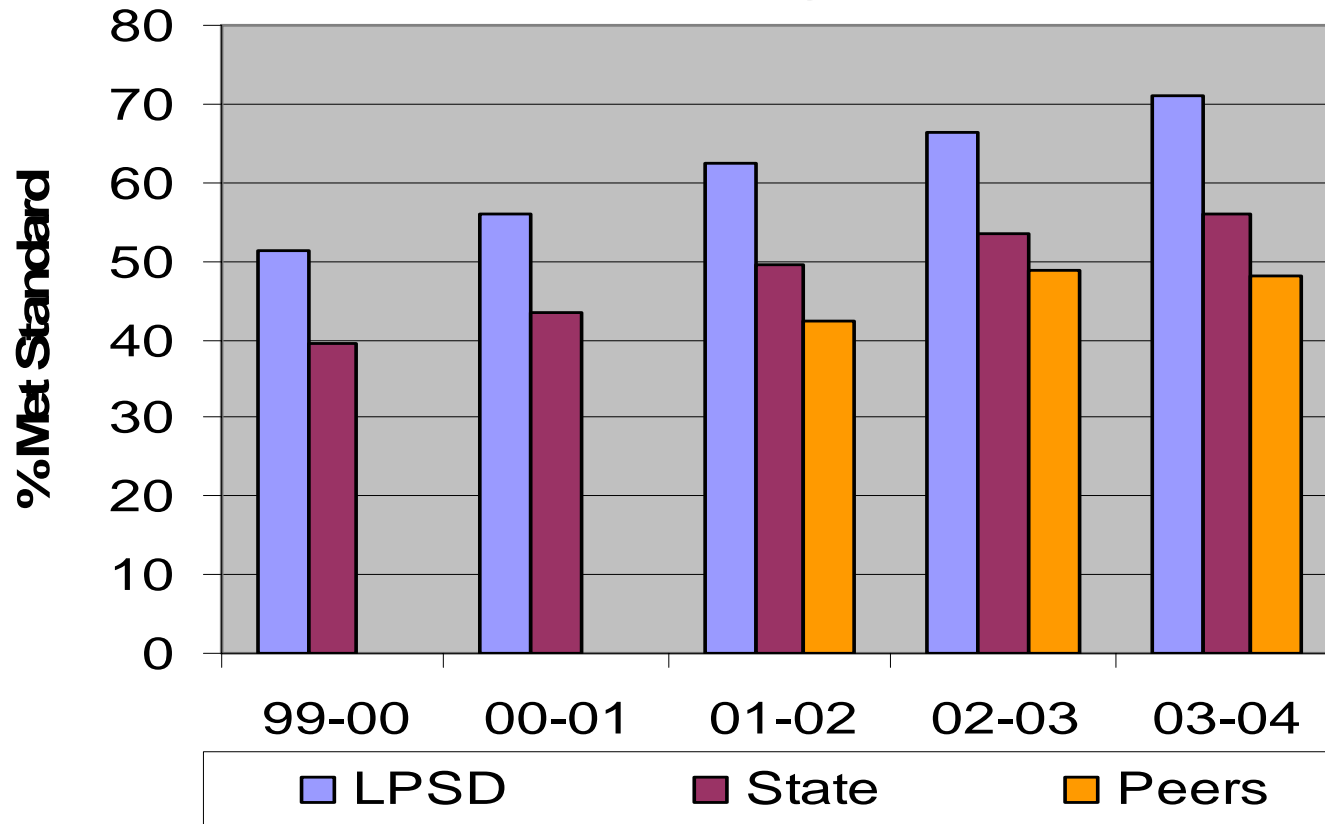
Student Performance Trends

Figure 7.1-5
4th Grade Reading WASL Trend



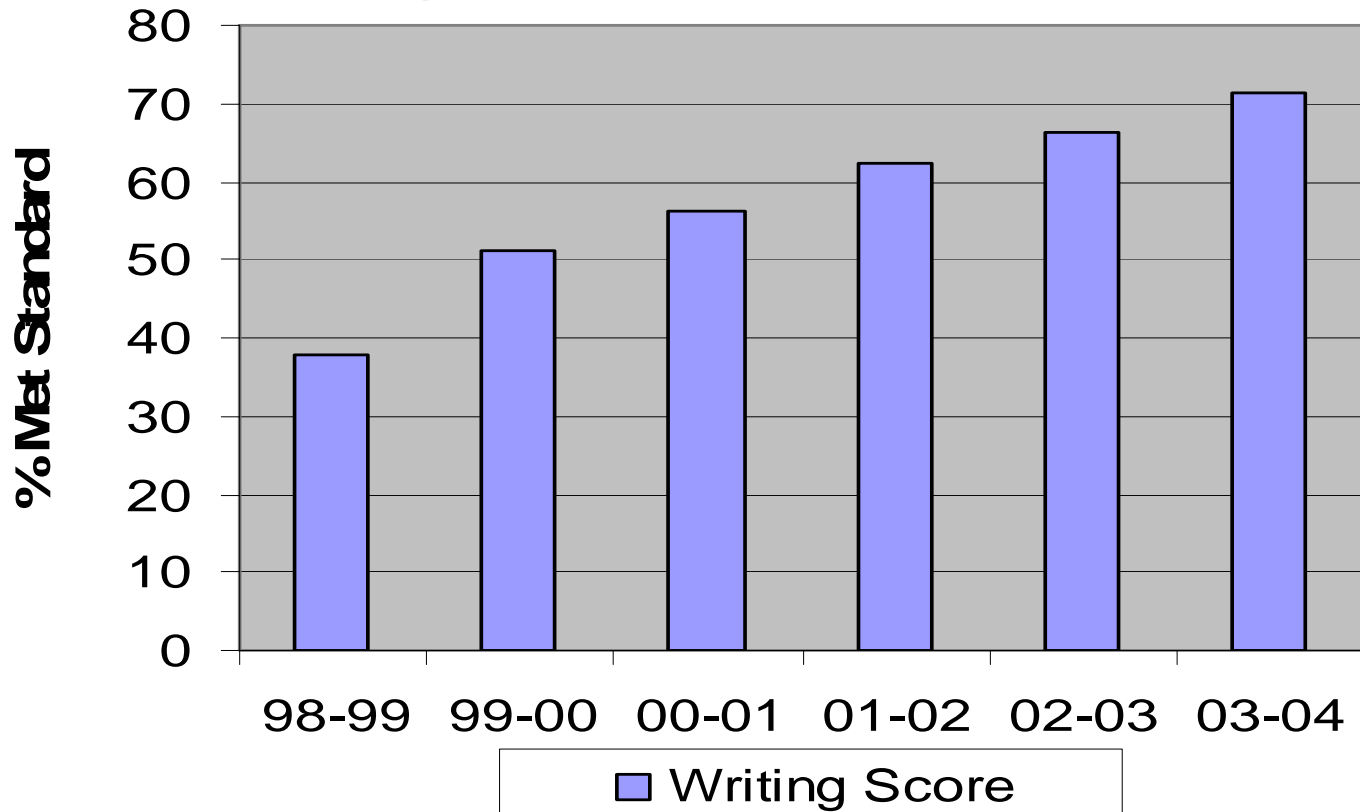
Student Performance Trends

Figure 7.1-6
4th Grade Writing WASL Trend



Student Performance Trends

Figure 7.5-1
Writing Score Improvement 1999-2004





Fiscal Performance Trends

- **Summary of LPSD Audit Findings: 1997 – 2003**

- | <i>Audit Years</i> | <i>Audit Type</i> | <i>Program Findings</i> | <i>Fiscal Findings</i> |
|---------------------------|--------------------------|--------------------------------|-------------------------------|
| 1997 – 98 | Federal Only | 0 | 0 |
| 1998 – 99 | Comprehensive | 0 | 0 |
| 1999 - 00 | Federal Only | 0 | 0 |
| 2000 – 01 | Comprehensive | 0 | 0 |
| 2001 – 02 | Federal Only | 2 | 0 |
| 2002 – 03 | Comprehensive | 1 | 0 |



Fiscal Performance Trends

- **Transportation Services Cost per Mile**

○ <i>Year</i>	<i>Costs</i>	<i>Miles</i>	<i>Cost/Mile</i>
99-00	\$527,067	268,905	\$1.960
00-01	\$580,385	278,580	\$2.083
01-02	\$548,385	283,443	\$1.935
02-03	\$562,605	274,831	\$2.041
03-04	\$596,971	264,436	\$2.258



Fiscal Performance Trends

- **Transportation Services Cost per Student Comparison – Annual Basis**

- | <i>Year</i> | <i>LPSD</i> | <i>County</i> | <i>Peers</i> | <i>State</i> |
|-------------|-------------|---------------|--------------|--------------|
| 99-00 | \$212.99 | NA | \$273.12 | \$262.63 |
| 00-01 | 238.52 | NA | 292.17 | 276.26 |
| 01-02 | 227.20 | 243.10 | 291.76 | 279.74 |
| 02-03 | 229.56 | 248.37 | 308.76 | 290.41 |
| 03-04 | 250.70 | 251.94 | 310.58 | 296.12 |



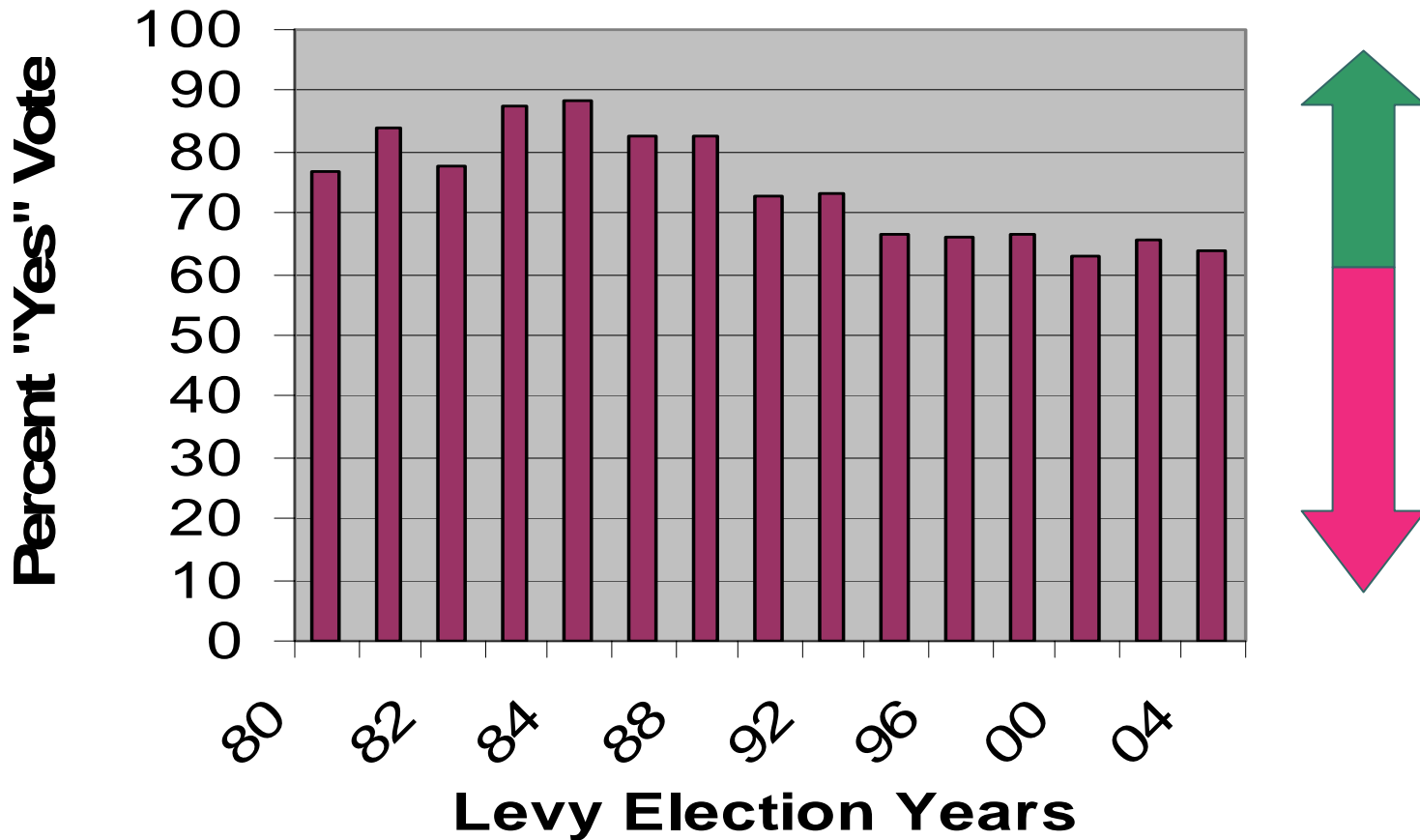
Compliance Performance

- ***LPSD Key Practices and Compliance: 2002 - 2004***

○ <i>Key Practices</i>	<i>Level of Compliance</i>
○ OSHA/WISHA	100% Compliant
IDEA Compliance	100% Compliant
Fire Code Inspections	100% Compliant
Health Inspections	100% Compliant
Asbestos Control Program	100% Compliant
Policy Book	0 Lawsuits
Harassment – Employee	0 Complaints
Open Meetings Act	0 Complaints
Labor Contracts	2 Grievances

Customer Satisfaction Trends

Figure 7.2-1 LPSD Levy Yes Vote Percentage by Election





In Conclusion:

- Be prepared to work smarter not harder;
- Data matters (but only when applied to meaningful comparisons);
- Quality is a process not a “Thing”; and
- Be prepared to enjoy the journey and accept the disappointments. A world class organization is not built in a day.